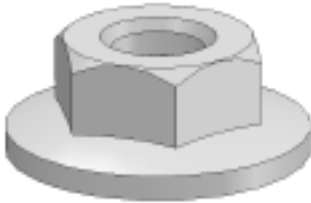


## MOEREN / NUTS

### FLENSMOER FLANGE NUT

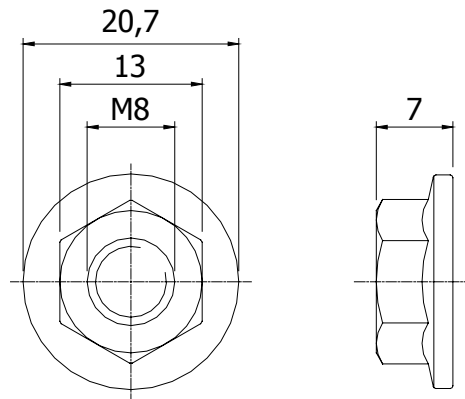


**Techn. gegevens / techn. specifications:**

- Staal / steel
- Elektrolytisch verzinkt / zinc plated

**Kenmerk / feature:**

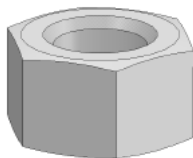
- Extra grote flens / extra large flange



| Afname / purchase  | Korting / discount |
|--------------------|--------------------|
| ... stuks / piece  |                    |
| 100 stuks / pieces | 10%                |

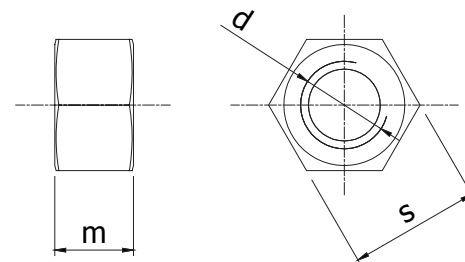
| Type | Eenheid / unit | Art. code |
|------|----------------|-----------|
| M8   | Stuk / piece   | 122000    |

### MOER DIN 934 EV NUT DIN 934 ZP



**Techn. gegevens / techn. specifications:**

- Staal / steel
- Elektrolytisch verzinkt / zinc plated
- Klasse 8 / Class 8



| d | M3  | M4  | M5 | M6 | M8  | M10 | M12 |
|---|-----|-----|----|----|-----|-----|-----|
| m | 2,4 | 3,2 | 4  | 5  | 6,5 | 8   | 10  |
| s | 5,5 | 7   | 8  | 10 | 13  | 17  | 19  |

| Afname / purchase  | Korting / discount |
|--------------------|--------------------|
| ... stuks / piece  |                    |
| 100 stuks / pieces | 10%                |

| Type | Eenheid / unit | Art. code |
|------|----------------|-----------|
| M3   | Stuk / piece   | 901500    |
| M4   | Stuk / piece   | 901502    |
| M5   | Stuk / piece   | 901504    |
| M6   | Stuk / piece   | 901506    |
| M8   | Stuk / piece   | 901508    |
| M10  | Stuk / piece   | 901510    |
| M12  | Stuk / piece   | 901512    |