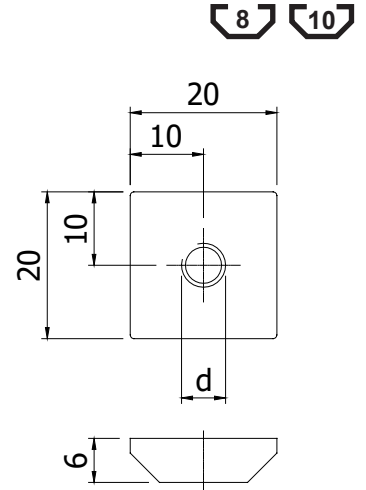
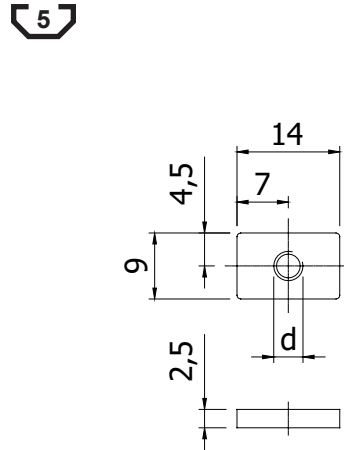
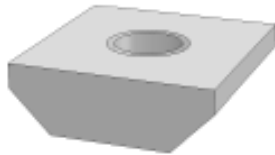
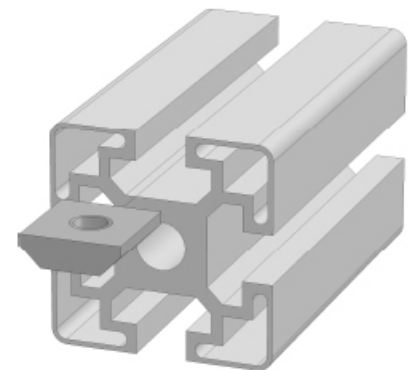
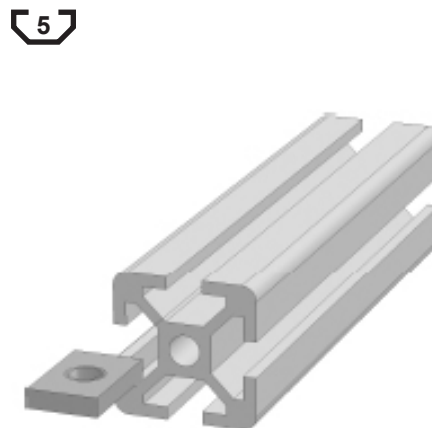


SLEUFMOER, VLAK
THREADED PLATE

5 8E 8 8S 10



Toepassing / application



Techn. gegevens / techn. specifications:

- Staal / steel
- Elektrolytisch verzinkt / zinc plated

Kenmerk / feature:

- Alleen an de kopzijden van het profiel in te brengen / can only be placed from the end face of a profile

| Afname / purchase | Korting / discount |
|-------------------|--------------------|
| ... stuks / piece | |
| 50 stuks / pieces | 10% |

| | Type (sleuf / groove - d) | Eenheid / unit | Art. code |
|----|---------------------------|----------------|-----------|
| 5 | 5 - M4 | Stuk / piece | 122600 |
| | 5 - M5 | Stuk / piece | 122605 |
| 8 | 8,10 - M4 | Stuk / piece | 122610 |
| | 8,10 - M5 | Stuk / piece | 122615 |
| 10 | 8,10 - M6 | Stuk / piece | 122620 |
| | 8,10 - M8 | Stuk / piece | 122625 |