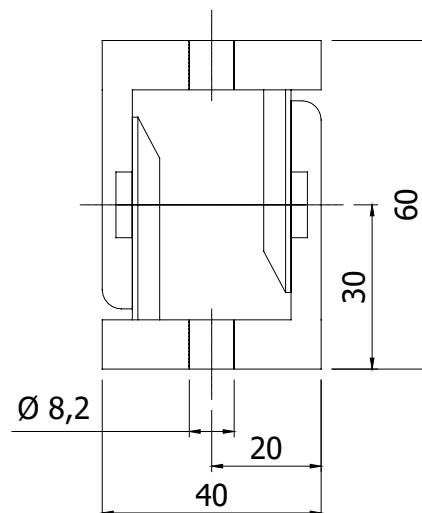
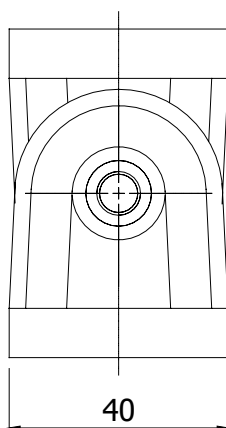
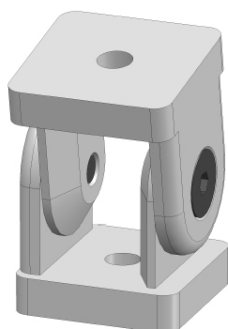


KNIESCHARNIER
JOINT

40



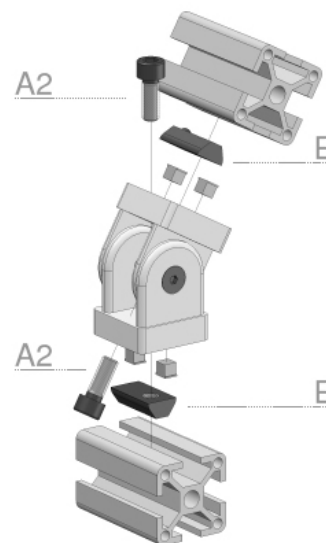
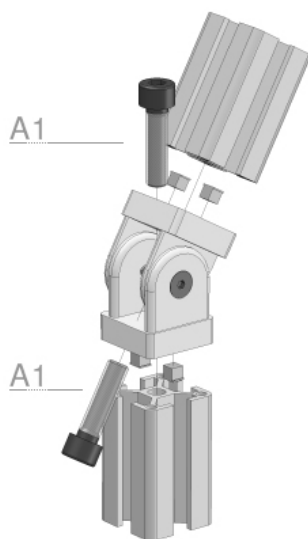
Techn. gegevens / techn. specifications:

- Gegoten zink / die-cast zinc
- RAL 9006

Kenmerk / features:

- Bewegbare verbindingen tussen profielen / moveable connection between profiles
- Inclusief centreerplaatjes / Including centering plates
- Kniescharnier 40, gelagerd wordt geleverd met bevestigingsmiddelen / Fastenings are included for joint 40, journalled
- Korting is niet geldig op kniescharnier 40, gelagerd / discount is not applicable on joint 40, journalled

Toepassing / application



Afname / purchase	Korting / discount
... stuks / piece	
50 stuks / pieces	10%

	Omschrijving / description	Eenheid / unit	Art. code
	Kniescharnier 40 Joint 40	Stuk / piece	130505
	Kniescharnier 40, gelagerd Joint 40, journalled	Stuk / piece	130508
	Accessoires / accessories	Eenheid / unit	Art. code
A1	Cilindrische inbusbout M8 x 30 Cylindrical socket screw M8 x 30	Stuk / piece	900158
A2	Cilindrische inbusbout M8 x 20 Cylindrical socket screw M8 x 20	Stuk / piece	900152
B	Sleufmoer met kogel 8 - M8 Sliding block 8 - M8	Stuk / piece	122330