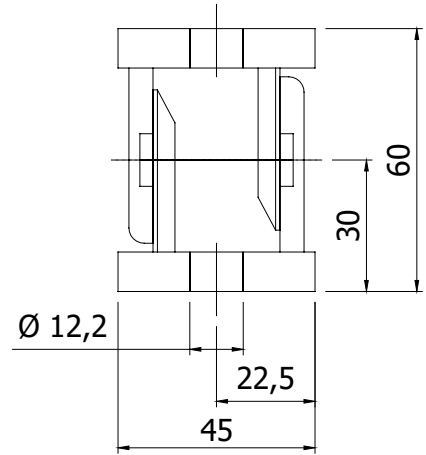
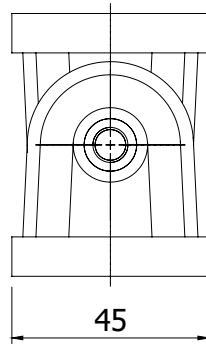
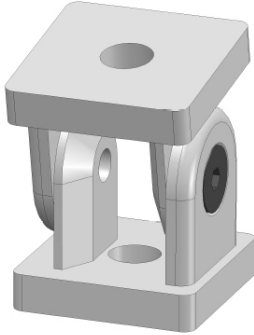


**KNIESCHARNIER**  
JOINT

45



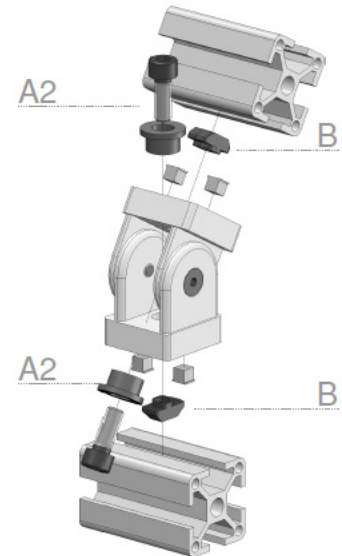
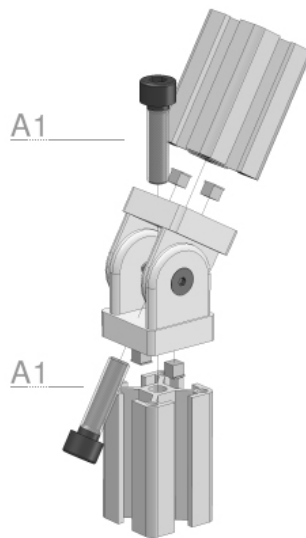
**Techn. gegevens / techn. specifications:**

- Gegoten zink / die-cast zinc
- RAL 9006

**Kenmerk / features:**

- Beweegbare verbindingen tussen profielen / moveable connection between profiles
- Inclusief centreerplaatjes en opvulling / Including centering plates and spacer

**Toepassing / application**



**Afname / purchase    Korting / discount**

... stuks / piece

Omschrijving / description		Eenheid / unit	Art. code
	Kniescharnier 45 Joint 45	Stuk / piece	130510
Accessoires / accessories		Eenheid / unit	Art. code
A1	Cilindrische inbusbout M12 x 30, DIN 7984 verk. kop Cylindrical socket screw M12 x 30, DIN 7984 shorten head	Stuk / piece	920001
A2	Cilindrische inbusbout M8 x 20 Cylindrical socket screw M8 x 20	Stuk / piece	900152
B	Hamermoer 10 - M8 T-nut 10 - M8	Stuk / piece	122095