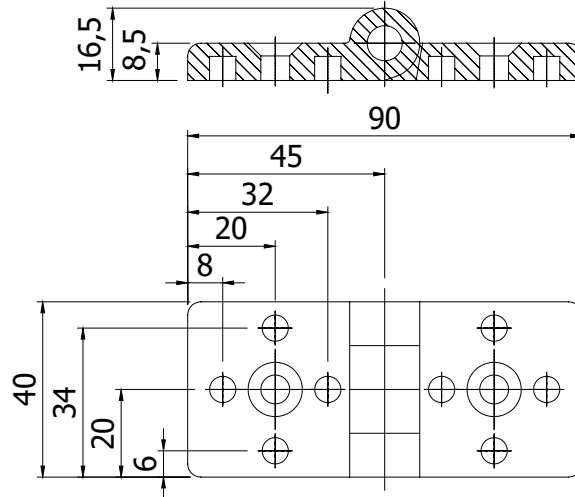
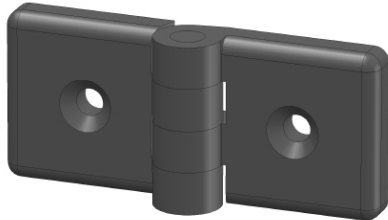
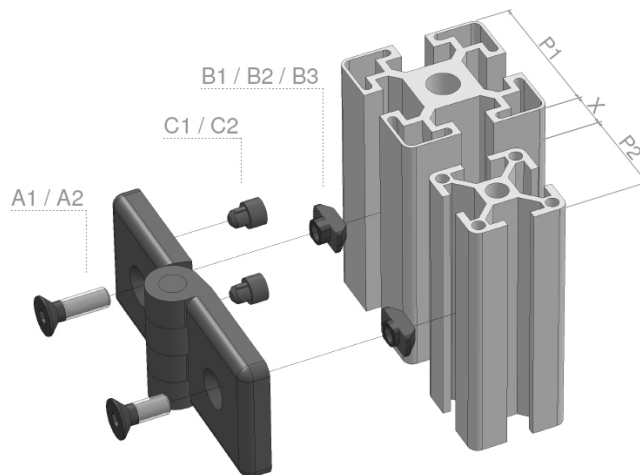


**SCHARNIER**  
HINGE

45 x 45



**Toepassing / application**



**Profiel serie**  
Profile serie

P1	P2	X
40	40	10
45	30	12,5
45	40	7,5
45	45	5
60	30	5
60	40	0

**Techn. gegevens / techn. specifications:**

- PE
- Zwart / black

**Belasting / load:**

- Max. 200 Nm

**Kenmerk / feature:**

- Voor het bevestiging van deuren, ramen, etc. / connecting doors, windows etc.
- Combinatie van profielen en sleufmaten mogelijk / applicable with various profiles and groove types

**Afname / purchase Korting / discount**

... stuks / piece	
50 stuks / pieces	10%

**Omschrijving / description**

**Eenheid / unit**

**Art. code**

Scharnier 45 x 45 Hinge 45 x 45	Stuk / piece	140310
------------------------------------	--------------	--------

**Accessoires / accessories**

	A1	Verzonken inbusbout M6 x 12 Countersunk head screw M6 x 12	Stuk / piece	900582
	B1	Hamermoer 8E - M6 T-nut 8E - M6	Stuk / piece	122060
	A2	Verzonken inbusbout M6 x 16 Countersunk head screw M6 x 16	Stuk / piece	900584
	B2	Hamermoer 8 - M6 T-nut 8 - M6	Stuk / piece	122075
	C1	Scharnier pin Ø8 mm Hinge pin Ø8 mm	Stuk / piece	140365
	A2	Verzonken inbusbout M6 x 16 Countersunk head screw M6 x 16	Stuk / piece	900584
	B3	Hamermoer 10 - M6 T-nut 10 - M6	Stuk / piece	122090
	C2	Scharnier pin Ø10 mm Hinge pin Ø10 mm	Stuk / piece	140370