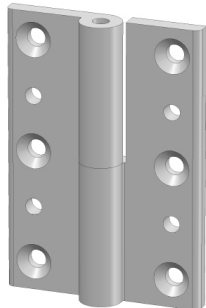


SCHARNIER 45
HINGE 45



Techn. gegevens / techn. specifications:

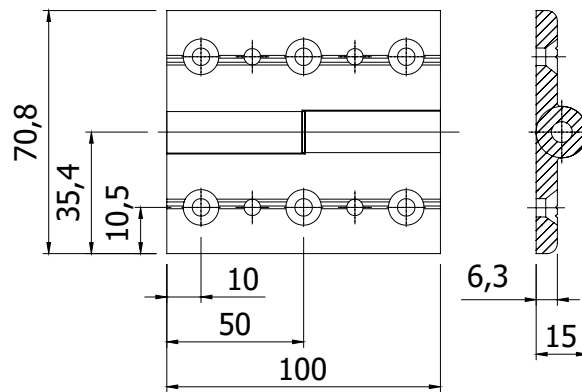
- Aluminium / aluminum

Kenmerk / feature:

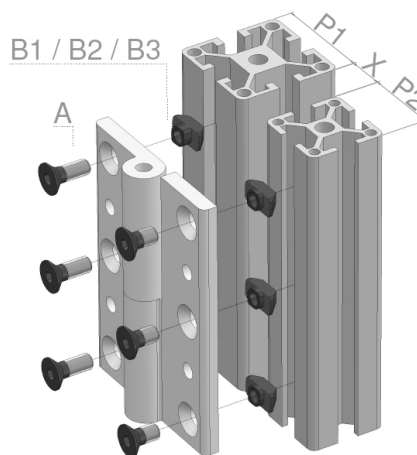
- Voor het bevestiging van deuren, ramen, etc. / connecting doors, windows etc.
- Combinatie van profielen en sleufmaten mogelijk / applicable with various profiles and groove types

Toep. voorbeelden / application samples:

- Uitneembare deur met scharnieren links (L) of rechts (R) / detachable door with hinges on the left (L) or right (R) side

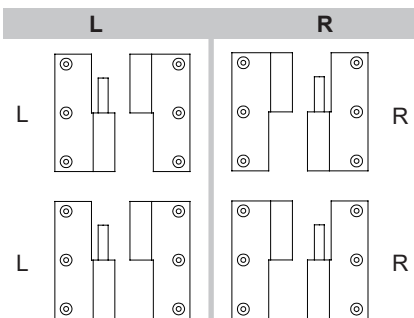


Toepassing / application

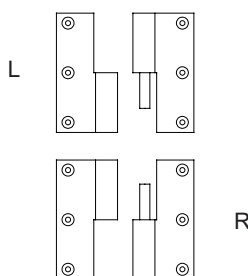


Profiel serie
Profile serie

P1	P2	X
30	30	20
40	30	15
40	40	10
45	40	7,5
45	45	5



- Niet uitneembare deur / non-detachable door



Afname / purchase Korting / discount

... stuks / piece

Omschrijving / description	Eenheid / unit	Art. code
Scharnier 45 - rechts, alu Hinge 45 - right, alu	Stuk / piece	140360
Scharnier 45 - links, alu Hinge 45 - left, alu	Stuk / piece	140362

Accessoires / accessories

	A1	Verzonken inbusbout M6 x 12 Countersunk head screw M6 x 12	Stuk / piece	900582
	B1	Hamermoer 8E - M6 T-nut 8E - M6	Stuk / piece	122060
	A2	Verzonken inbusbout M6 x 16 Countersunk head screw M6 x 16	Stuk / piece	900584
	B2	Hamermoer 8 - M6 T-nut 8 - M6	Stuk / piece	122075
	A2	Verzonken inbusbout M6 x 16 Countersunk head screw M6 x 16	Stuk / piece	900584
	B3	Hamermoer 10 - M6 T-nut 10 - M6	Stuk / piece	122090