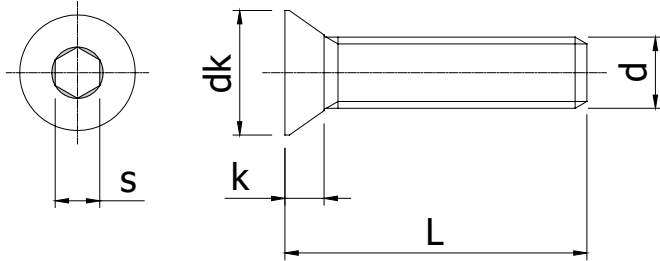
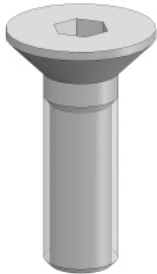


VERZONKEN INBUSBOUT DIN 7991 EV
COUNTERSUNK HEAD SCREW DIN 7991 ZP



Techn. gegevens / techn. specifications:

- Staal / steel
- Elektrolytisch verzinkt / zinc plated
- Klasse 8.8 / Class 8.8

| d | M5 | M6 | M8 |
|----|------|------|-----|
| dk | 9,5 | 10,5 | 14 |
| k | 2,75 | 3,3 | 4,4 |
| s | 3 | 4 | 5 |

| Afname / purchase | Korting / discount |
|--------------------|--------------------|
| ... stuks / piece | |
| 100 stuks / pieces | 10% |

| Type (d x L) | Eenheid / unit | Art. code |
|--------------|----------------|-----------|
| M4 x 8 | Stuk / piece | 900524 |
| M4 x 10 | Stuk / piece | 900526 |
| M4 x 12 | Stuk / piece | 900528 |
| M4 x 16 | Stuk / piece | 900530 |
| M4 x 20 | Stuk / piece | 900532 |
| M5 x 10 | Stuk / piece | 900550 |
| M5 x 12 | Stuk / piece | 900552 |
| M5 x 16 | Stuk / piece | 900554 |
| M5 x 20 | Stuk / piece | 900558 |
| M5 x 25 | Stuk / piece | 900562 |
| M5 x 30 | Stuk / piece | 900564 |
| M5 x 35 | Stuk / piece | 900566 |
| M6 x 12 | Stuk / piece | 900582 |
| M6 x 16 | Stuk / piece | 900584 |
| M6 x 20 | Stuk / piece | 900586 |
| M6 x 25 | Stuk / piece | 900588 |
| M6 x 30 | Stuk / piece | 900590 |
| M6 x 35 | Stuk / piece | 900592 |
| M6 x 40 | Stuk / piece | 900594 |
| M6 x 45 | Stuk / piece | 900596 |
| M6 x 50 | Stuk / piece | 900598 |
| M8 x 10 | Stuk / piece | 900610 |
| M8 x 12 | Stuk / piece | 900612 |
| M8 x 16 | Stuk / piece | 900614 |
| M8 x 20 | Stuk / piece | 900616 |
| M8 x 25 | Stuk / piece | 900618 |
| M8 x 30 | Stuk / piece | 900620 |
| M8 x 40 | Stuk / piece | 900624 |
| M12 x 30 | Stuk / piece | 900680 |