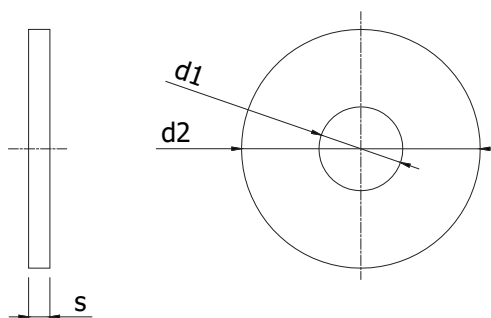
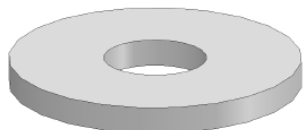


CARR. RING DIN 9021 EV
REPAIR WASHER DIN 9021 ZP



Techn. gegevens / techn. specifications:

- Staal / steel
- Elektrolytisch verzinkt / zinc plated

Type	d1	d2	s
M3	3,2	9	0,8
M4	4,4	12	1
M5	5,3	15	1,2
M6	6,4	18	1,6
M8	8,4	24	2
M10	10,5	30	2,5
M12	13	37	3
M16	17	50	3

Afname / purchase	Korting / discount
... stuks / piece	

Type	Eenheid / unit	Art. code
M3	Stuk / piece	901800
M4	Stuk / piece	901802
M5	Stuk / piece	901804
M6	Stuk / piece	901806
M8	Stuk / piece	901808
M10	Stuk / piece	901810
M12	Stuk / piece	901812
M16	Stuk / piece	901816